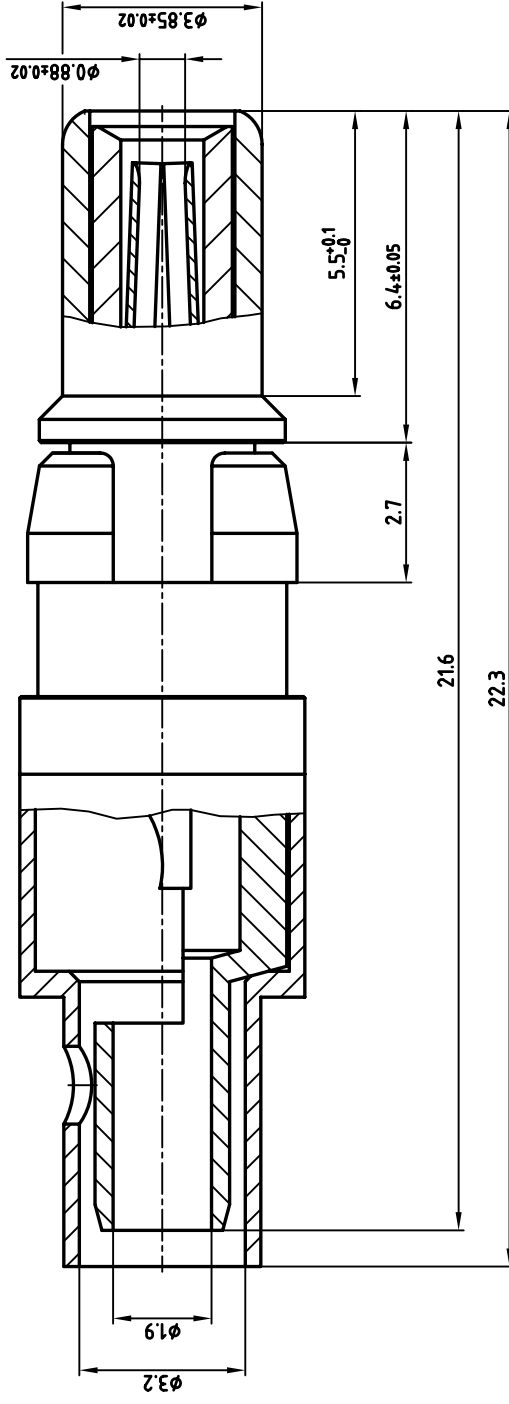


used for: D-SUB COMBINATION



| | | | |
|---|------------|--|--------|
| APPROVAL # FREIGABE # DEBLOCKAGE # AUTORIZACION # APPROVAL CUSTOMER APPROVAL DATE: | | APPROVAL # FREIGABE # DEBLOCKAGE # AUTORIZACION # APPROVAL TITLE: | |
| NAME: | | COMPANY NAME: | |
| APPROVAL # FREIGABE # DEBLOCKAGE # AUTORIZACION # APPROVAL | | APPROVAL # FREIGABE # DEBLOCKAGE # AUTORIZACION # APPROVAL | |
| THIS DRAWING MAY NOT BE COPIED OR REPRODUCED IN ANY WAY, AND MAY NOT BE PASSED ON TO A THIRD PARTY WITHOUT WRITTEN PERMISSION. OWNERSHIP AND COPYRIGHT OF CONEC GMBH DO NOT ALTER CAD DRAWING BY HAND | | | |
| tolerance | dim. in mm | name | date |
| | | Lehmenträger | 29.08. |
| | | Mickenbecker | 30.08. |
| | | norm | |
| | | e-old | |
| scale: 10:1 | | title: COAXIAL CONTACT PLUG 50 Ohm | |
| material: | | Inner conductor solder termination | |
| outer conductor solder or crimp termination | | AutoCAD 2004 DIN-A | |
| dwg no: 13K2IAPA | | sh: 1/1 | |
| part no: 131J20029X | | rev. description date name | |